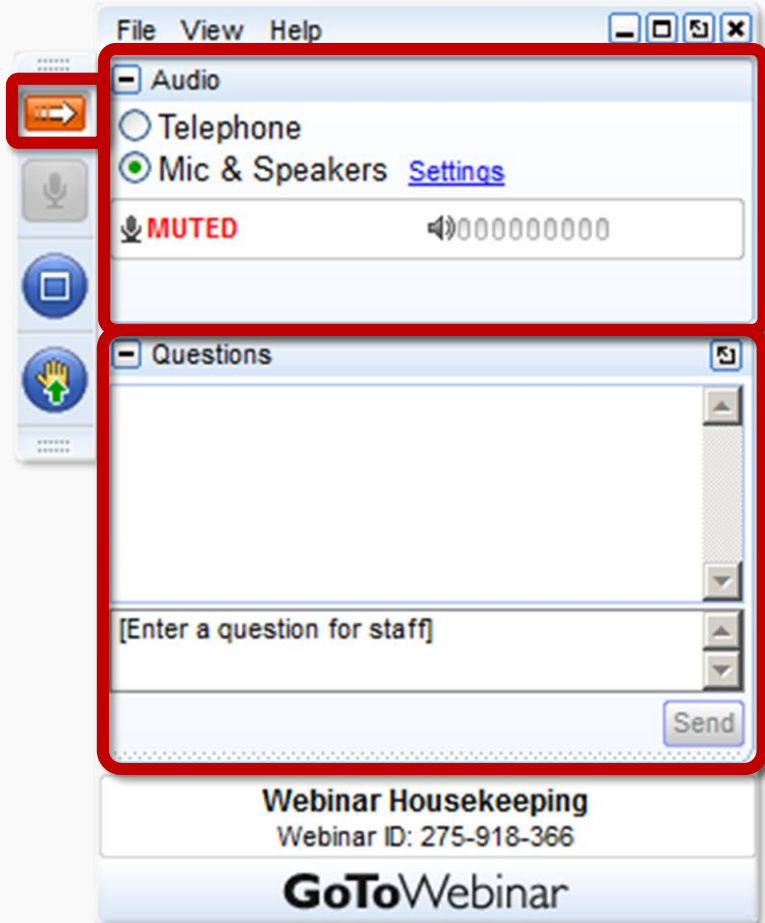


# **Development of the Strategic Plan for Targeted Outreach to Populations Affected by Lead**

**Water Infrastructure Improvements for the Nation  
(WIIN) Act**

**Safe Drinking Water Act 1414 (c)(5)**

**March 23, 2017  
12:30-2:30pm Eastern**



## Helpful Tips

Open and close your control panel

Join audio:

- Choose **Mic & Speakers** to use VoIP
- Choose **Telephone** and dial using the information provided

Submit questions and comments via the Questions panel

**Note:** presentation slides are available on the WIIN website.



## Poll 1: How many people are the room?

- a. 1
- b. 2
- c. 3
- d. 4
- e. 5 or more



## Poll 1: What is your affiliation?

- a. U.S. EPA
- b. State Government
- c. Water System
- d. Water Association and TA Providers
- e. Other

# **Development of the Strategic Plan for Targeted Outreach to Populations Affected by Lead**

**Water Infrastructure Improvements for the Nation  
(WIIN) Act**

**Safe Drinking Water Act 1414 (c)(5)**

*Opening Remarks: Anita Thompkins  
Director, Drinking Water Protection Division*



## Agenda

- Review of WIIN Act, SDWA 1414 (c)(5): Exceedance of Lead Level at Households
- Question and Answer Session
- Demo on Draft Strategic Plan and Specific Aspects for Feedback
- Next Steps
- Question and Answer Session



**Review of WIIN Act, SDWA 1414 (c)(5):  
Exceedance of Lead Level at Households**



## Development of Strategic Plan

- The WIIN Act requires EPA to develop a strategic plan
- The purpose of the strategic plan is to ensure targeted information is provided to households affected by lead (affected households)
- The strategic plan development must be done in collaboration with primacy agencies and owner/operators of public water system
- Deadline for development of the strategic plan is 180 days after enactment - June 14, 2017





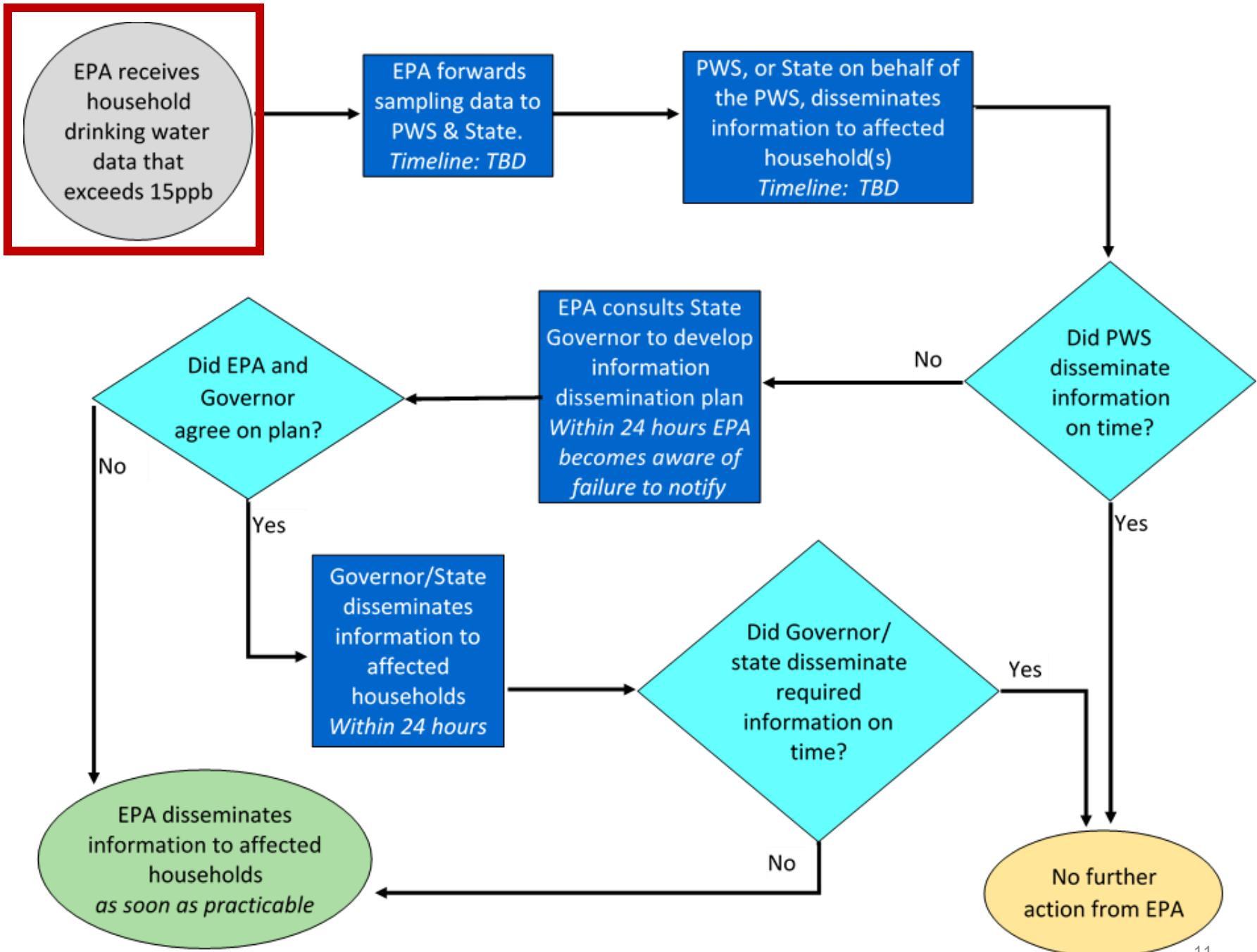
## Requirements for the Strategic Plan

- The strategic plan will discuss the method by which EPA, states, and the public water system will ensure that specific information is communicated to affected households.
- This information shall provide:
  - Targeted outreach
  - Education
  - Technical assistance
  - Risk communication



## Information that Must be Communicated

- The WIIN Act specifically requires the following information to be communicated to affected households:
  - a clear explanation of the potential adverse effects on human health of drinking water that contains a concentration of lead that exceeds the lead action level
  - the steps that the owner or operator of the public water system is taking to mitigate the concentration of lead; and
  - the necessity of seeking alternative water supplies until the date on which the concentration of lead is mitigated.

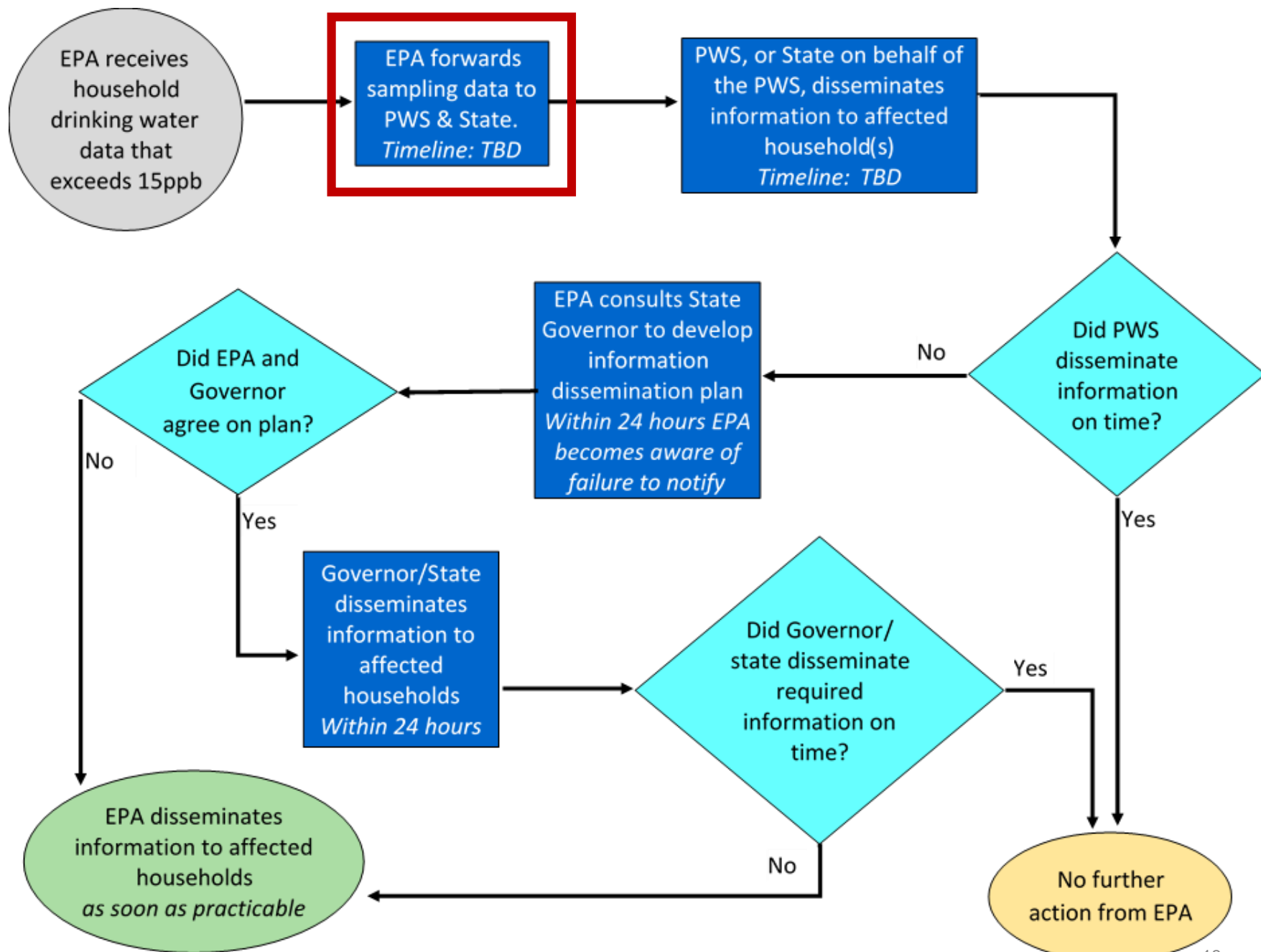


This flow diagram outlines the general process. See 1414(c)(5) for full details.



## Step 1 – EPA Receives or Develops Lead Data

- EPA develops or receives data from a household that exceed the lead action level
- Data received must be from a source other than the primacy agency or public water system
- EPA will need to first evaluate and determine the validity of the data to include
  - Data developed using accepted or best available methods (section 1412(b)(3)(A)(ii))
  - Must exceed lead action level is 0.015 mg/L; 40 CFR 141.80(c)

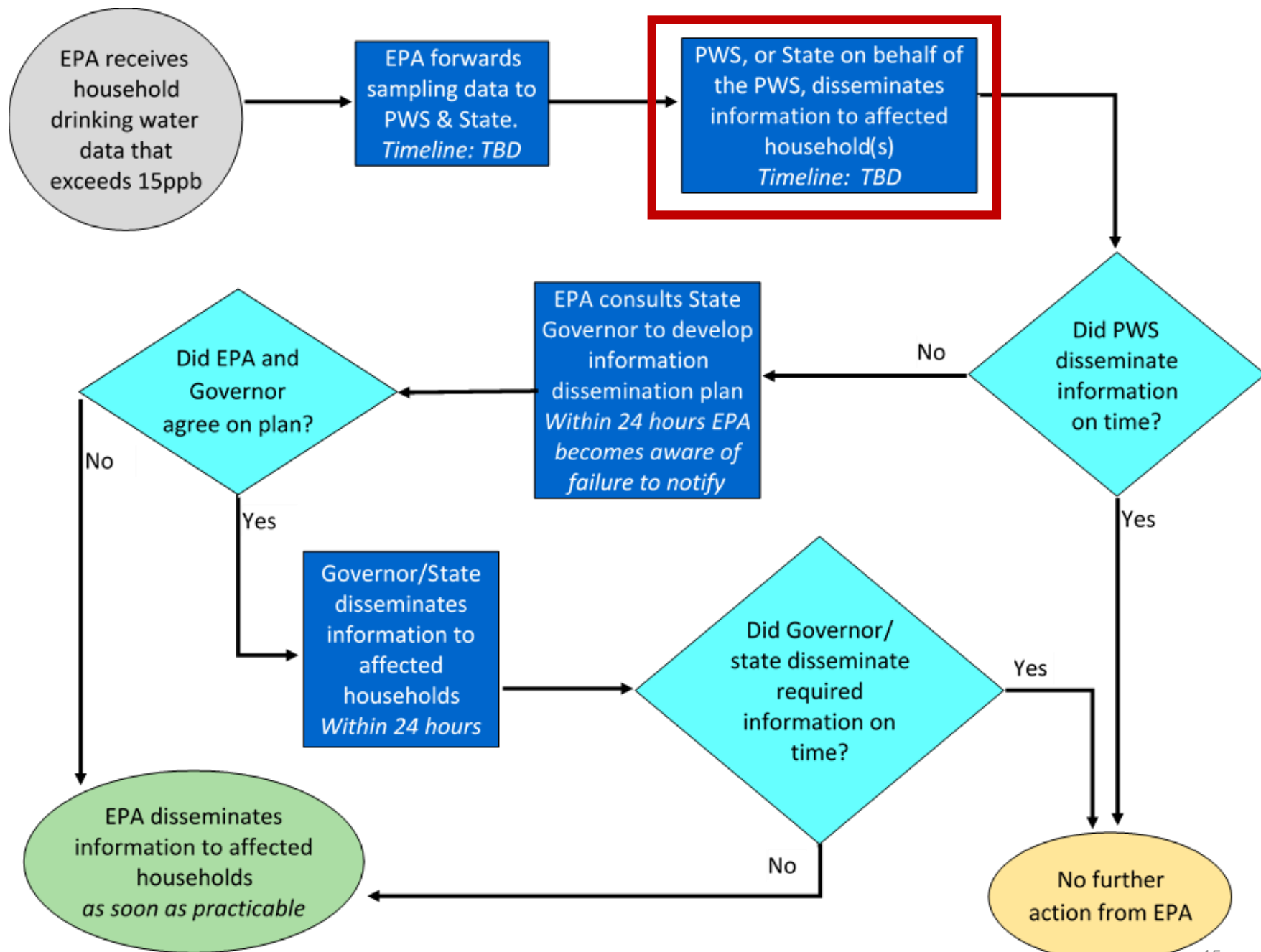


This flow diagram outlines the general process. See 1414(c)(5) for full details.



## **Step 2 – EPA Forwards Data to State Agency and Public Water System**

- EPA will forward, in a time period determined by the Administrator, the data to the primacy agency and the owner/operator of the public water system
- EPA must also include information on the sampling technique used to collect the data



This flow diagram outlines the general process. See 1414(c)(5) for full details.



## **Step 3 – The Owner/Operator of Public Water System Shall Disseminate**

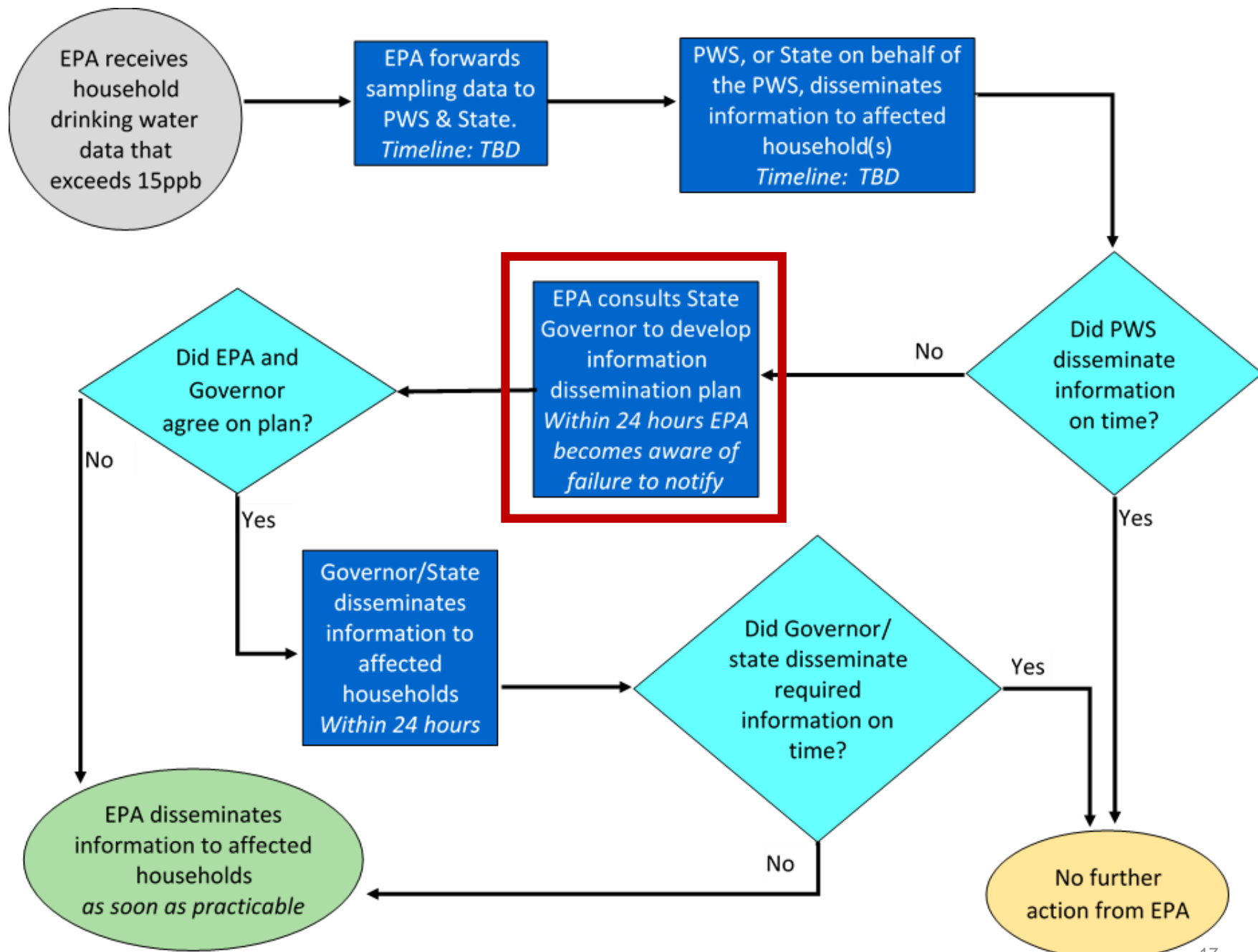
### **IF:**

- The public water system has not already notified the affected households of
  - The concentration of lead in the drinking water AND
  - The concentration of lead exceeds the lead action level

### **THEN:**

- The owner/operator shall disseminate the required information to the affected households
- The state primacy agency may distribute this information on behalf of the public water system
- Shall be done in a time period established by the Administrator



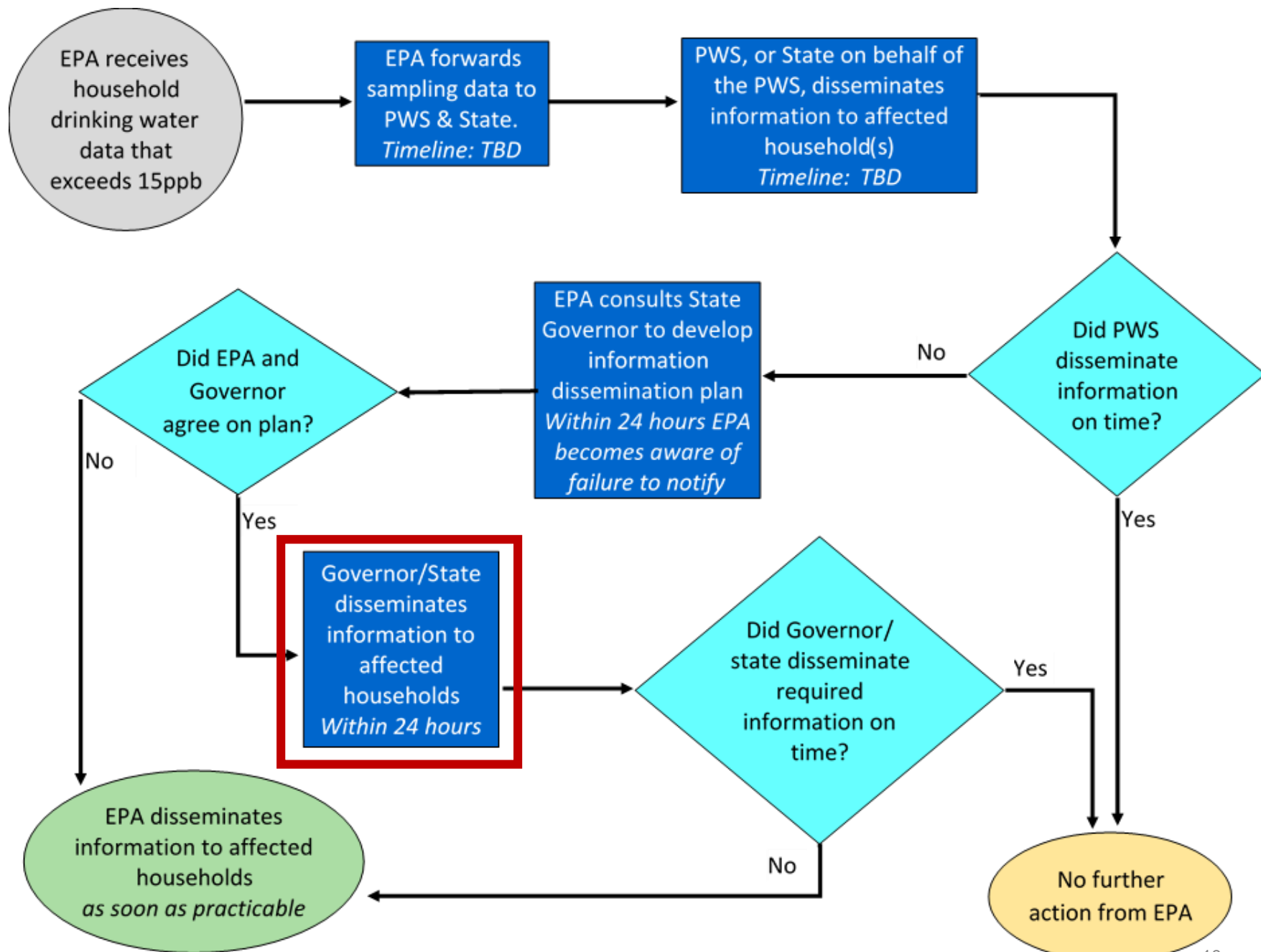


This flow diagram outlines the general process. See 1414(c)(5) for full details.



## Step 4 – EPA Consultation with State Governor

- Provided that the owner/operator of the PWS, or the state on their behalf, does not disseminate the information to the affected households:
  - EPA must contact the applicable Governor within 24 hours of becoming aware of the situation
  - EPA shall consult, within a period not to exceed 24-hours, with the Governor to develop a plan to disseminate the data



This flow diagram outlines the general process. See 1414(c)(5) for full details.



## Step 5 – State to Disseminate Information

### IF:

- The Governor agrees to disseminate the information to the affected households

### THEN:

- This must occur within 24 hours after the end of the consultation period





## Step 6 – EPA to Disseminate Information

### IF:

- EPA learns that:
  - The owner/operator, or the state on their behalf, has not disseminated the information to the affected households **and**
  - EPA and the applicable Governor do not agree on a plan to disseminate the information, **or**
  - The applicable Governor does not disseminate the information within 24 hours after the end of the consultation period

### THEN:

- EPA shall, as soon as practicable, disseminate the information to the affected households



# Questions?



A large, faint watermark of the Environmental Protection Agency (EPA) logo is centered in the background. The logo consists of a circular border containing the text "UNITED STATES" at the top and "ENVIRONMENTAL PROTECTION AGENCY" at the bottom, separated by two dots. In the center of the circle is a stylized green leaf with three main branches and a central stem.

**DEMO**  
**Draft Strategic Plan and specific aspects  
for feedback**





## Next Steps

- Project website: <https://wcms.epa.gov/dwreginfo/strategic-plan-targeted-outreach-populations-affected-lead>
- Draft Strategic Plan available on website
- Questions/comments can be sent to:  
[WIINStrategicPlan@epa.gov](mailto:WIINStrategicPlan@epa.gov)
  - Please submit comments on first draft by: Wednesday, April 5<sup>th</sup>



## WIIN Strategic Plan Timeline 2017

<b>March 23<sup>rd</sup></b>	<ul style="list-style-type: none"> <li>• Webinar meeting with stakeholders to discuss outline and receive feedback.</li> <li>• Provide a two-week comment period.</li> </ul>
<b>Late April</b>	<ul style="list-style-type: none"> <li>• EPA will use stakeholder feedback to finalize the draft.</li> </ul>
<b>Early May</b>	<ul style="list-style-type: none"> <li>• Host second webinar meeting with stakeholders.</li> <li>• Initiate second one-week comment period</li> </ul>
<b>Late May</b>	<ul style="list-style-type: none"> <li>• Incorporate final edits and finalize the strategic plan.</li> </ul>
<b>Early June</b>	<ul style="list-style-type: none"> <li>• Post final strategic plan to EPA webpage.</li> <li>• Contact the stakeholders and provide them with the link.</li> <li>• Host additional public webinars to discuss implementation</li> </ul>
<b>June 14<sup>th</sup></b>	<ul style="list-style-type: none"> <li>• EPA must complete the strategic plan.</li> </ul>
<b>TBD</b>	<ul style="list-style-type: none"> <li>• Roll out webinar</li> </ul>



# Questions?





## Conclusion

- We recognize that EPA, states, and public water systems already collaborate to notify the public.
- The purpose of the strategic plan is to ensure targeted information is provided to affected households.
- During this presentation we provided many areas where we seek your input to help ensure the effectiveness of this strategic plan.
- EPA looks forward to feedback from stakeholders
- Contact: [WIINStrategicPlan@epa.gov](mailto:WIINStrategicPlan@epa.gov)