

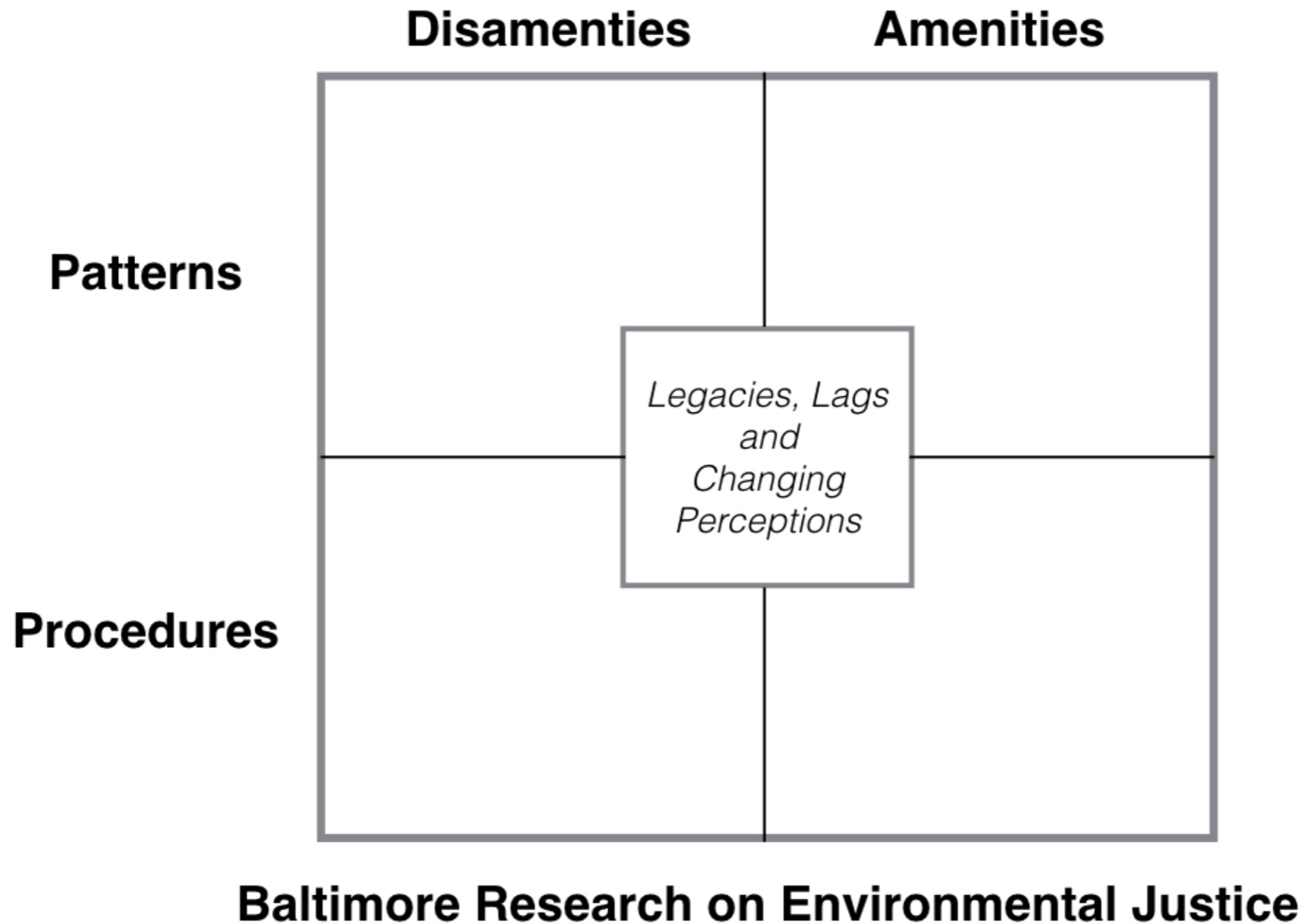
Baltimore Ecosystem Study and Environmental Justice Research

J. Morgan Grove

Baltimore Field Station Team Leader

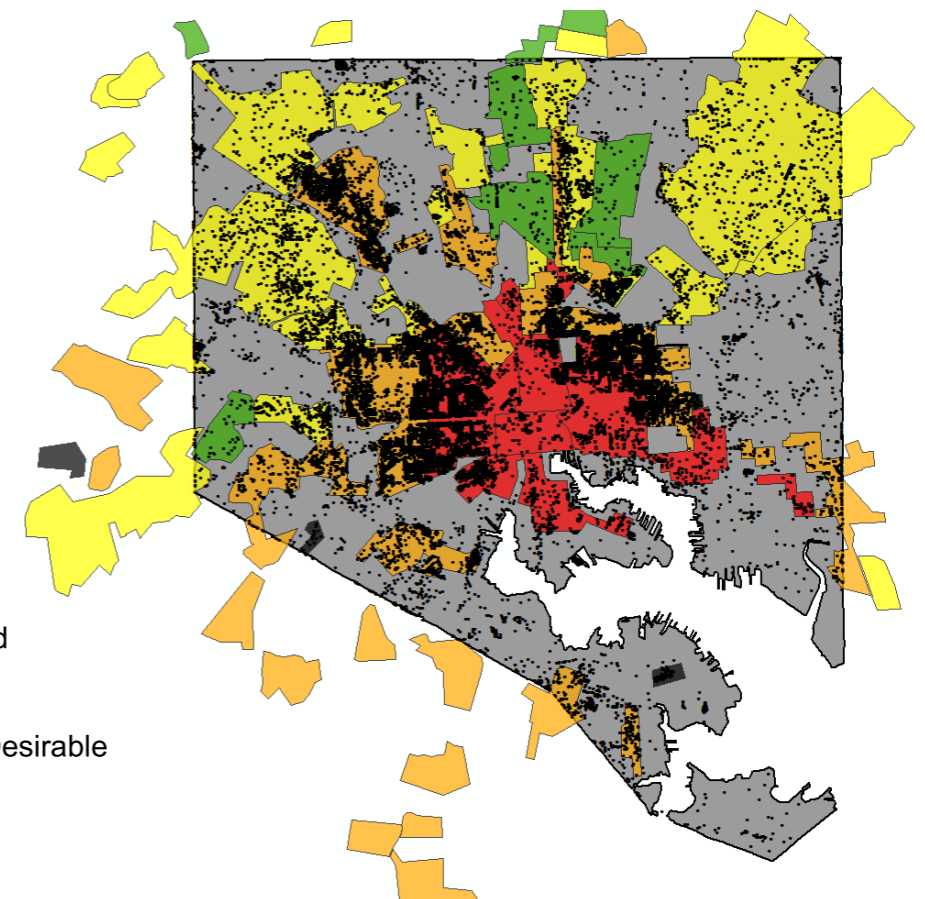
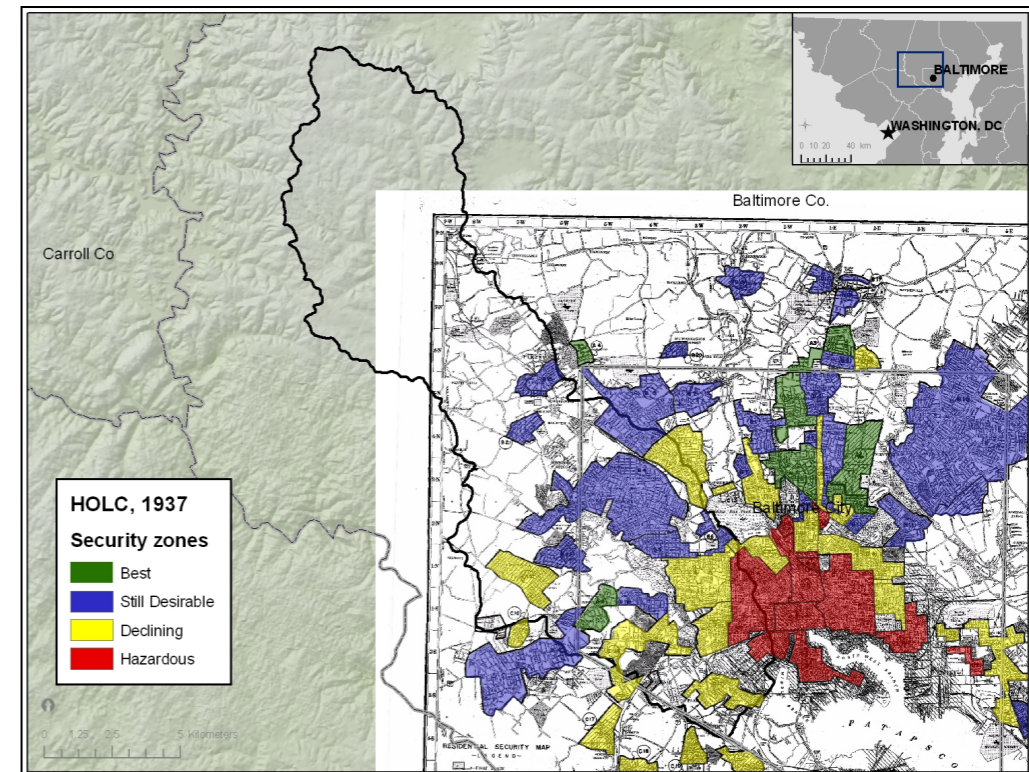
mgrove@fs.fed.us / 802.238.4328

Organizing Framework



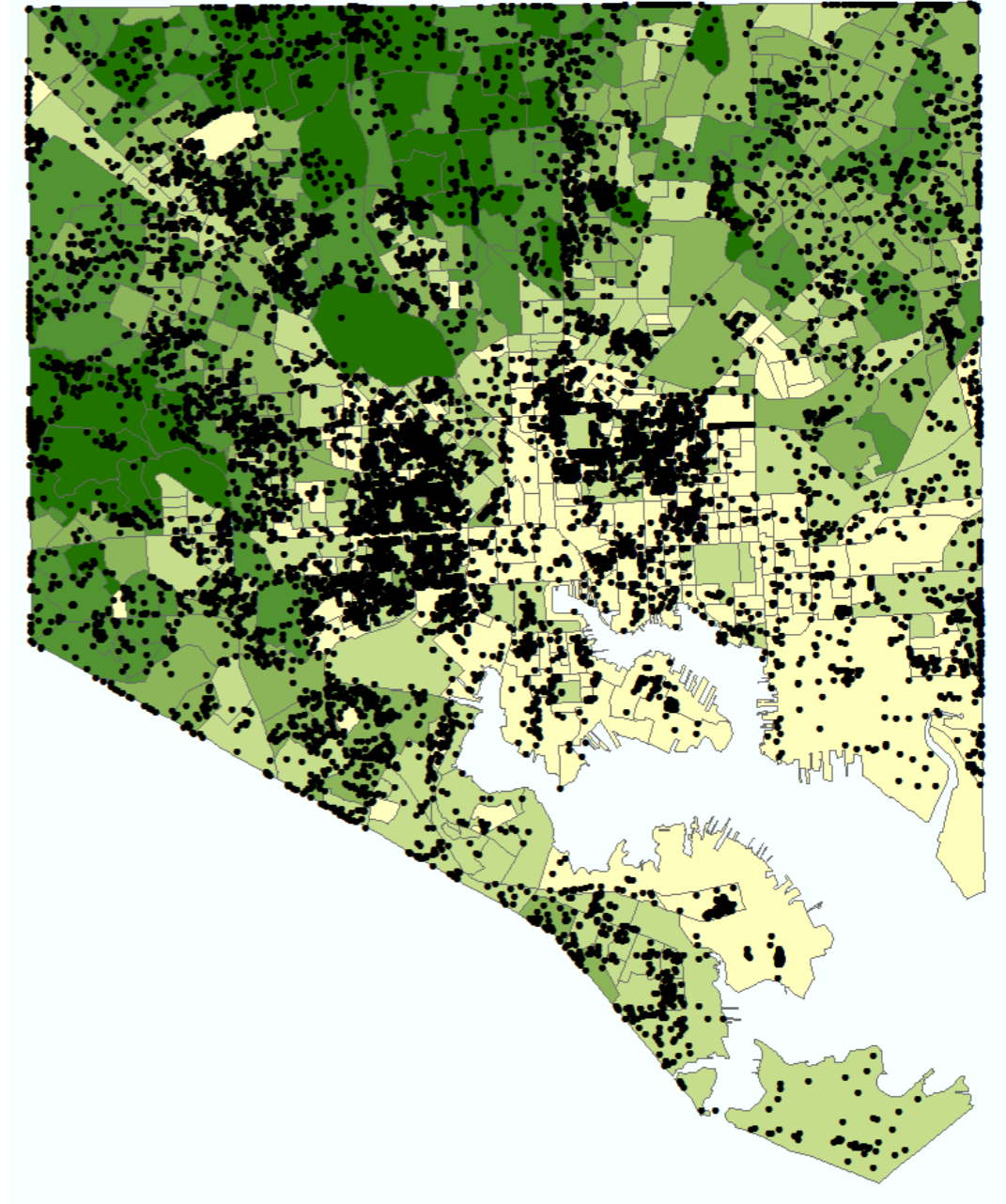
Patterns and Disamenities

- Land use
 - Toxic Release Inventory (TRI) sites. Legacies associated with residential segregation.
 - Zoning variances
- Vacant lots and houses
 - Legacies associated with HOLC
- Urban Heat Island
 - Canopy and impervious extent and patch size
- Crime
 - Canopy extent and maintenance
- Floodplains
 - Historic stream valleys. Legacies associated with residential segregation.
 - Recent shorelines
- Public health
 - Infant mortality



Patterns and Amenities

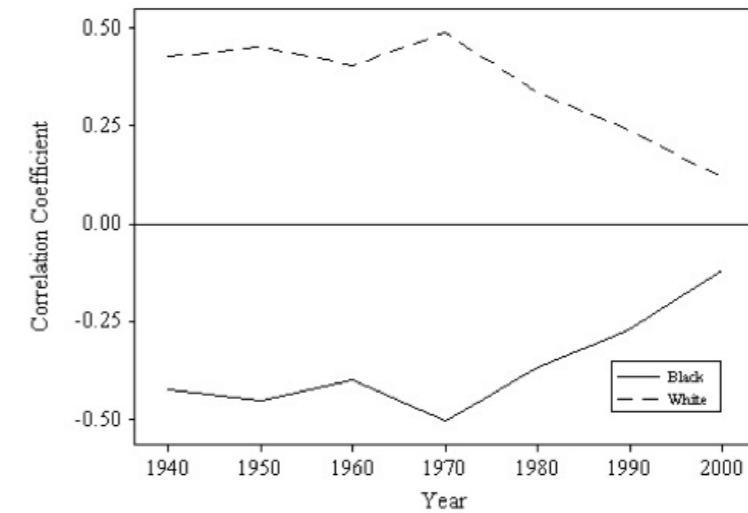
- Canopy Cover
 - Lags associated with inherited landscapes
 - Legacies associated with vacant lots
- Park Access
 - Legacies associated with inherited landscapes
- Park Size



Procedures and Disamenities

Race vs. Zoning Variances:

Disamenity Bias Is Substantial but Declines over Time.



- Land use
 - Zoning variances: rationale of previous conditions. Legacy of 1937 Home Owners' Loan Corporation (HOLC) redlining.
- Park Access
 - Purchase of Leakin Park
 - Desegregation of Carroll Park

Recreation Opportunities for African-Americans in 1930s



Enoch Barker, "Boys playing a game of checkers on a sidewalk in Baltimore" c.1935-35
<http://epfl.mdch.org/u/?mdaa,55>



W.P.A. PROJECT
4 7012

Risk and Vulnerability

- Urban heat island. Interacting factors:
 - High **risk** populations: elderly and youth.
 - **Vulnerability** to high risk populations:
 - Residents in low income areas (no air conditioning)
 - High crime (windows closed)
 - Low social cohesion (people looking after each other).

BES IV Hypotheses

- Sustainability Initiatives: Tree planting programs
 - Markets, messengers, and messages
 - Conceptions of urban nature and place
 - Skepticism of government capacity to maintain
 - Fear of gentrification and displacement (green washing). Relationship between sustainability initiatives, neighborhood desirability, and property values (trees versus energy efficiency).

Data

- Landcover (NAIP: 1m)
- Temperature (Aster: 90m)
- Time-series Census (1930 - Present)
- Health records (birth, mortality, illness)
- Archival data: court and property records, meeting minutes, letters, newspaper articles, interviews
- Units of analyses: parcels/address and block groups