



Paterson, NJ and surrounding area

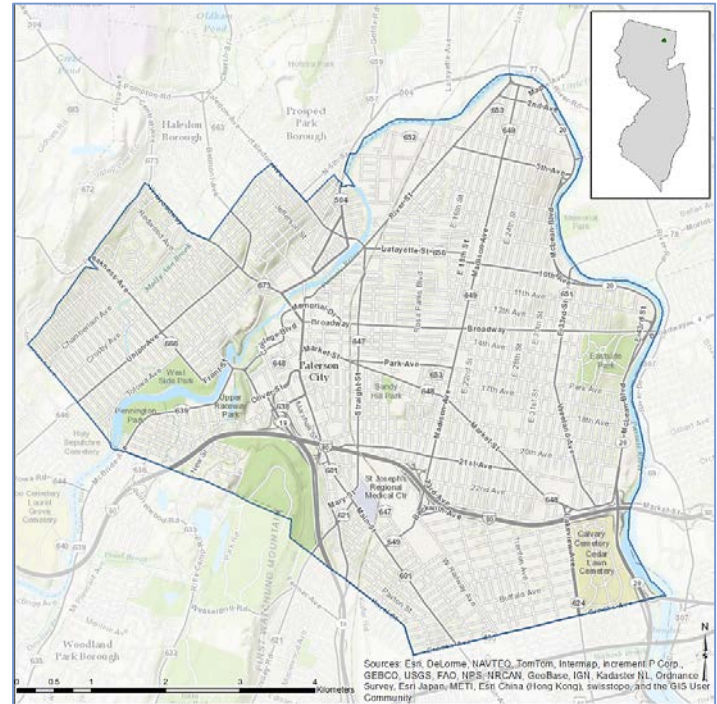
Towns and cities rely on clean air, clean water, green space, and other natural amenities for economic sustainability and quality of life, yet their benefits are not always fully understood or considered in local decisions. EPA and its partners are producing EnviroAtlas to help communities better use environmental assets for public good.

EnviroAtlas includes an online interactive mapping application that anyone can use. The interactive map contains over 200 maps available for the U.S., as well as 100+ fine-scale maps for selected U.S. communities about existing and potential benefits from the local natural environment. The EnviroAtlas community component is based on 1-meter resolution land cover data. Information derived from these data is summarized by census block groups; more spatially explicit map layers are also provided. This fact sheet highlights some of the many community data layers available for the featured area of Paterson, New Jersey.

Background

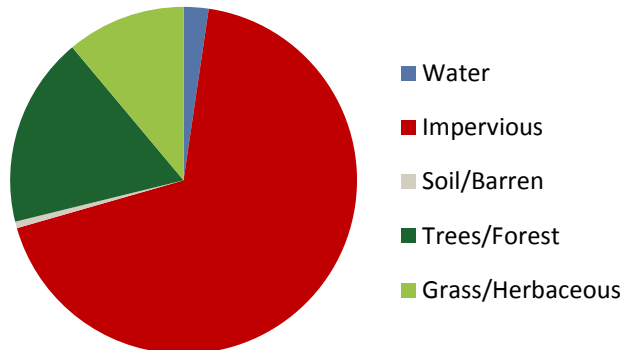
The Paterson, New Jersey area was chosen as an EnviroAtlas community because it is a priority area for EPA Region 2. The EnviroAtlas boundary for the Paterson area was determined using the 2011 municipal area from NAVTEQ. The area measures 23 square kilometers, and encompasses 107 census block groups.

The Paterson, New Jersey area is in the Northern Piedmont ecoregion. It has a transitional climate with hot summers and mild to cold winters. Historically, the area was



vegetated with Appalachian oak forests; however, much of the natural vegetation has been removed for farming and urbanization. There is significant urban and suburban development, surrounded primarily by agriculture. Paterson was once a major silk production area and the current industries are primarily related to fabric production such as dyeing and polymers. The largest employers in the area are St. Joseph's Regional Medical Center, the City of Paterson, and William Paterson University. The demographics of the Paterson community area indicate that the potential exists for income and other disparities in the distribution of environmental assets. EnviroAtlas includes demographic maps that can help screen for potential health and well-being disparities resulting from disproportionate

Percent Land Cover in Community Area



Paterson Area Demographics
2010 Census

Total population	146,199
Under 13 years old	20.01%
Over 70 years of age	5.82%
Other than white/non-Hispanic	90.82%
Below twice the U.S. poverty level	51.52%

distribution of “green infrastructure.

Ecosystem Services Overview

In EnviroAtlas, the benefits humans receive from nature are grouped into seven categories that demonstrate the interconnectedness of these ecosystem services:

- Clean air
- Clean and plentiful water
- Natural hazard mitigation
- Climate stabilization
- Recreation, culture, and aesthetics
- Biodiversity conservation
- Food, fuel, and materials (data available only for communities with farm land)

Examples of some of the data included in EnviroAtlas are detailed below:

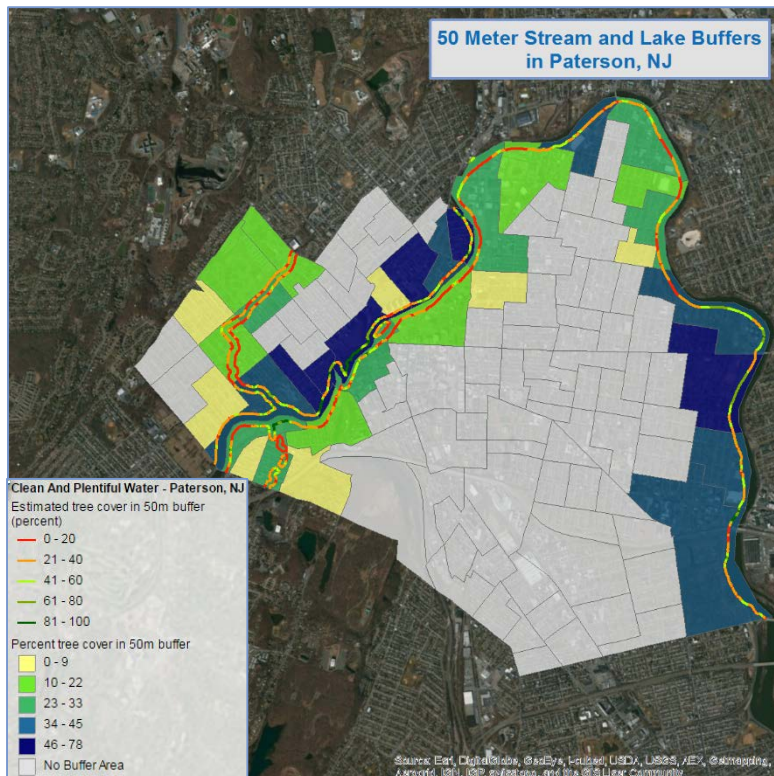
Access to Parks

Parks provide access to green space, encourage physical activity, and improve the livability and aesthetics of urban areas. Those who live closer to parks may be more likely to receive multiple benefits associated with this proximity.

- An estimated 55 percent of the Paterson area is located within easy walking distance (500 meters) of a park entrance.
- An estimated 30 percent of the Paterson population lives beyond easy walking distance (500 meters) of a park entrance.

Stream and Lake Buffers

Natural land cover adjacent to streams and rivers, sometimes called the riparian area or zone, helps protect



water quality and supply for drinking, recreation, and aquatic habitat. The EnviroAtlas community component analyzes stream and lake buffers with widths of 15 and 50 meters.

- An estimated 5.3 percent of Paterson’s land area is within 50 meters of a stream or lake.
- 32 percent of Paterson’s 50 meter stream and lake buffers contain less than 20 percent tree cover (shorelines indicated by red lines in the figure above).

EnviroAtlas Tools and Features

- Learn more about and download EnviroAtlas data: <https://www.epa.gov/enviroatlas/enviroatlas-data>
- Search our data layers and access their fact sheets: <https://www.epa.gov/enviroatlas/enviroatlas-dynamic-data-matrix>
- Explore data for the Paterson community area in our interactive mapping application: <https://www.epa.gov/enviroatlas/enviroatlas-interactive-map>
- Use our Eco-Health Relationship Browser to explore ecosystems, the services they provide, and their benefits to human health and well-being: <https://www.epa.gov/enviroatlas/enviroatlas-eco-health-relationship-browser>
- Contact us with questions about EnviroAtlas: <https://www.epa.gov/enviroatlas/forms/contact-enviroatlas>

EnviroAtlas combines maps, graphs, and other analysis tools, fact sheets, and downloadable data into an easy-to-use, web-based educational and decision-support tool. EnviroAtlas helps users understand the connections between the benefits we derive from ecosystem services and the natural resources that provide them. For more information, please visit www.epa.gov/enviroatlas.